

Empowering the workforce

Nathan Downing
Director of Membership Services
TSA

13 June 2024

TSA™





Technology for our Ageing Population: Panel for Innovation



The power of partnerships & shared learning



CO-PRODUCTION WORKS



www.housinglin.org.uk/tappi

Supporting outcomes through enabling solutions



Testbed sites worked together with tenants to identify needs as part of their assessment process and test out solutions based on individual needs:

- Hydration monitoring to promote improved wellbeing & reduce risk of UTI
- Use of smart speakers linked to devices around the home to support those with poor mobility - opening curtains, setting reminders
- Testing robotic vacuums - maintaining your home when accessing the property is difficult
- Promoting activity and safe walking using GPS devices and falls alerts when out and about
- Connected Care systems to build a pattern of everyday living and notify staff and families if habits change - proactive support and prevention of crises



#TAPPI

New TAPPI resources to aid your learning – www.housinglin.org.uk/tappi



HTML pages with findings for TAPPI2, and tools and resources to help you adopt the TAPPI principles, incl.:

TSA

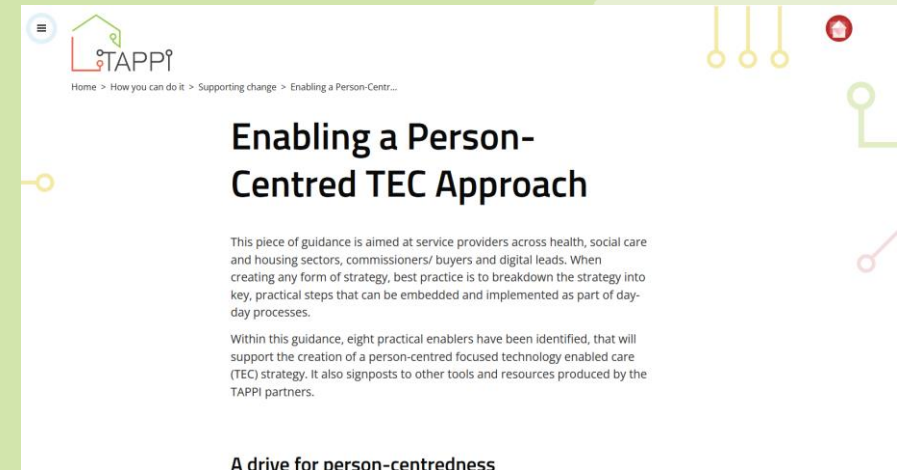
- practical tools, guidance and checklists to support organisations to take a similar approach to TAPPI.

Co-Production Works / Champions

- Info and guidance on co-production
- Animations

CCHPR

- Evaluation toolkit

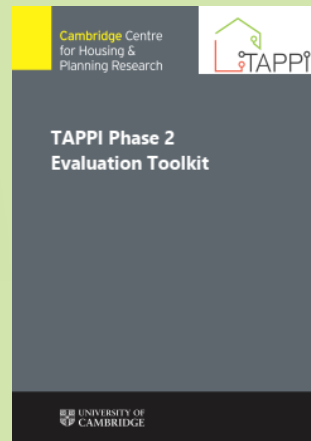


Frequently asked questions



What do I do if the members of a co-production group wish to do something that I feel is unsafe or against regulations?

It is extremely unusual that a situation arises as described in the question. As a professional you are accountable for decisions in a formal way, this may be through a

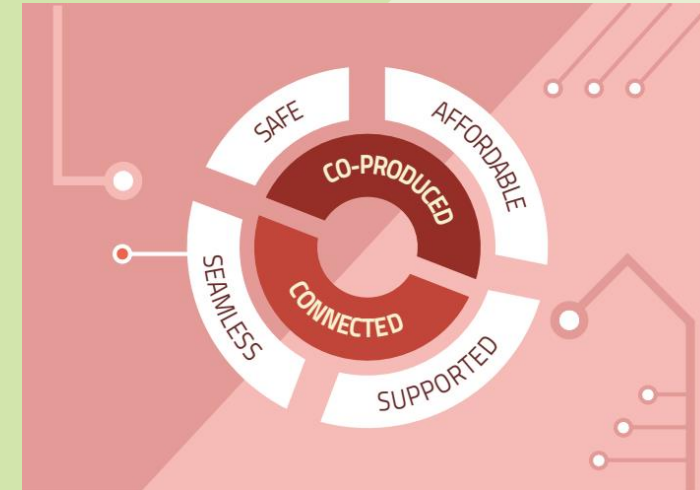


Bringing the TAPPI principles into practice – how could you embed within your organisation

There is an opportunity within all organisations across health, housing and care for a commitment to the adoption of the TAPPI principles within future activity, examples could include:

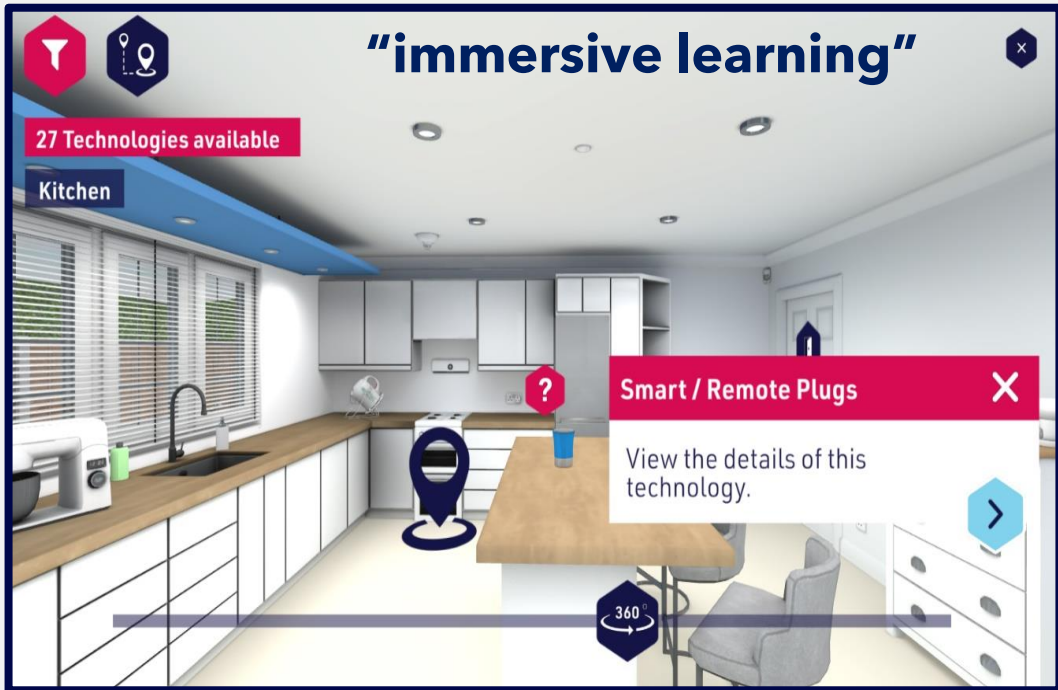
1. TAPPI principles applied across all TEC related procurement activity (and within general commissioning activity where relevant)
2. End-to-end quality is paramount - organisations should aim to have QSF certified services and products (installation, 24/7 monitoring, mobile response, supplier solutions)
3. Connectivity is a right and a vital element of supporting independence - it must be built into the fabric of the building from the point of initial plans and drawings - we should ensure connectivity is referenced within all accommodation strategies
4. Opportunity to embed a co-production ethos into the commissioning of services and involve those we support within the evaluation of service procurement

For all recommended activities there would need to be a mechanism for measuring activity levels and impact



#TAPPI

Workforce Development: Building Your TEC Knowhow



- More than 4,500 people across 20+ health, care and housing organisations active on the platform
- Within North East, regional collaboration with 1,200 people supported through the virtual properties, with goal of 100 people onboarded per organisation
- Focus is on supporting organisations to embed e-learning and increase quality referrals into TEC
- Further expansion into health and housing teams being explored over the coming months
- Using e-learning as core element of ASC induction





Thank you

Connect with TSA

<https://www.tsa-voice.org.uk/contact/>

TEC Voice

https://www.tsa-voice.org.uk/news_and_views/tec-voice/