



TRANSFORMING LIVES

THROUGH DIGITAL INNOVATION

The International Technology Enabled Care Conference. Unlocking insights. Building knowledge. Improving outcomes.

TSA™

Unlocking the power of proactive and preventative care services

Nerys Hebdon

Head of TEC Customer Enablement
Access Group



Technology Enabled Care

AI-Powered TEC

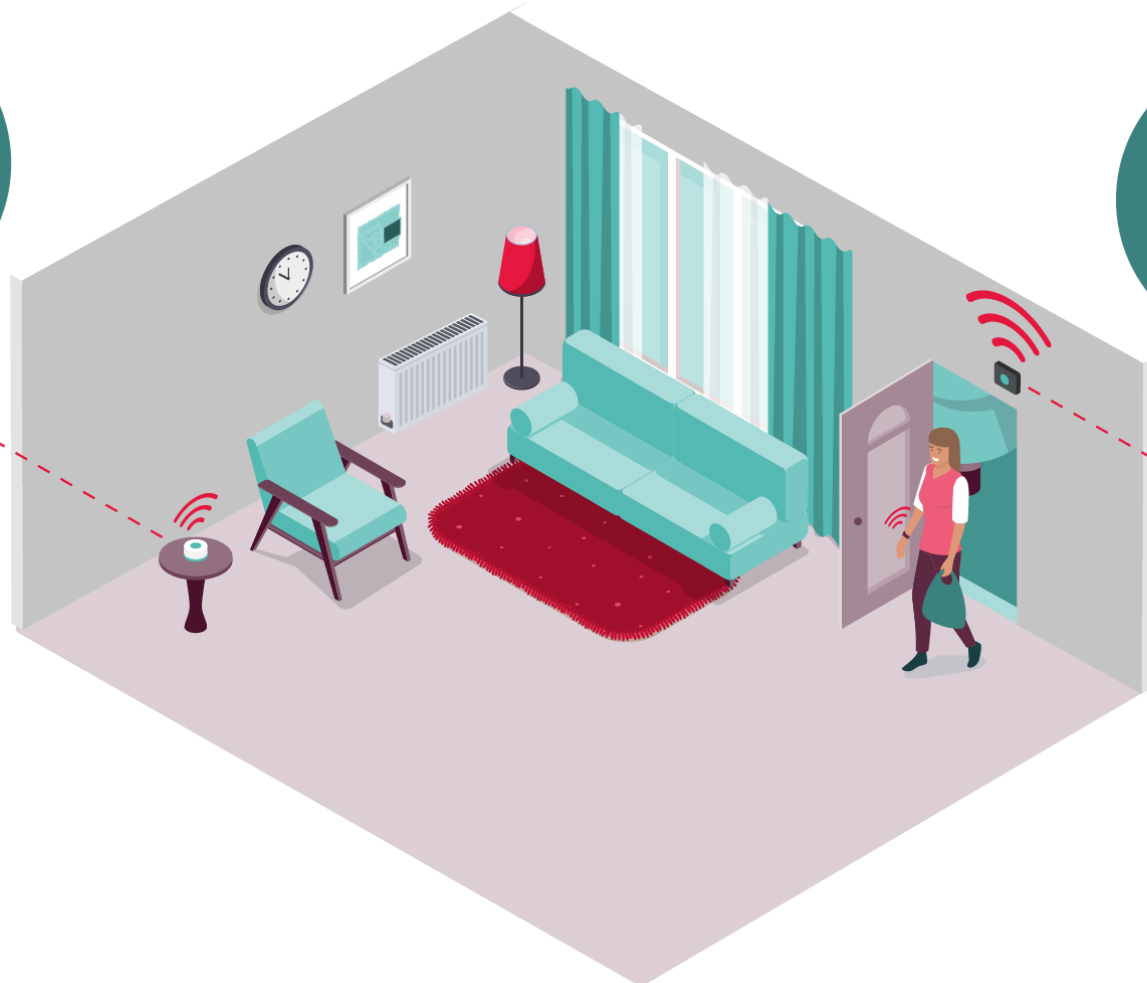
Reassurance and a Least Restrictive Life



Improving Lives and Reducing Pressure



AI alerts
changes in
daily routines



Evidence
of wellbeing
& reassurance

Prevent.

- People in crisis
- Ambulances & admissions

Health savings

Reduce. Delay.

- Dependency on support
- Home & residential care

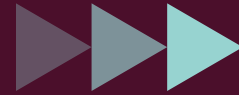
Council savings

TEC-enabled Social Care Practice

Resident Journey



Reduced 'Front Door' waiting & over-prescription of care; Support for Unpaid Carers



24/7 safeguarding for people whose needs aren't met by traditional telecare

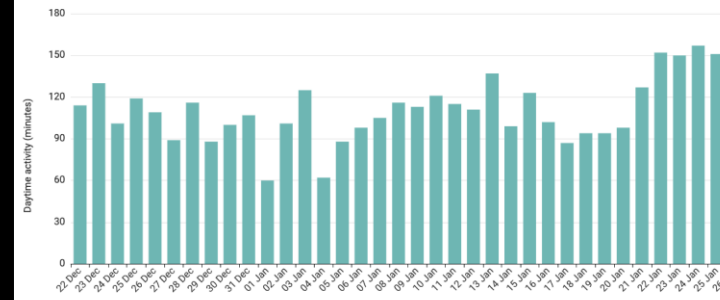


Mark doesn't want or need Supported Living
Sensors & app reassure his family of his safety & wellbeing



Reduced dependency with wellbeing evidence at Care Reviews & Panels

Daytime activity (last 8 weeks)



Daytime activity long term trends computed on 06/02/2025 with sensor data collected over the past 8 weeks.

- Daytime activity shows a **strong** long term trend over time.
- Daytime activity is **gradually increasing** with respect to time.

Insights in Social Care Record

Local Authorities



Service Delivery Partners



Care Providers



ARC Partners



Recognition

